



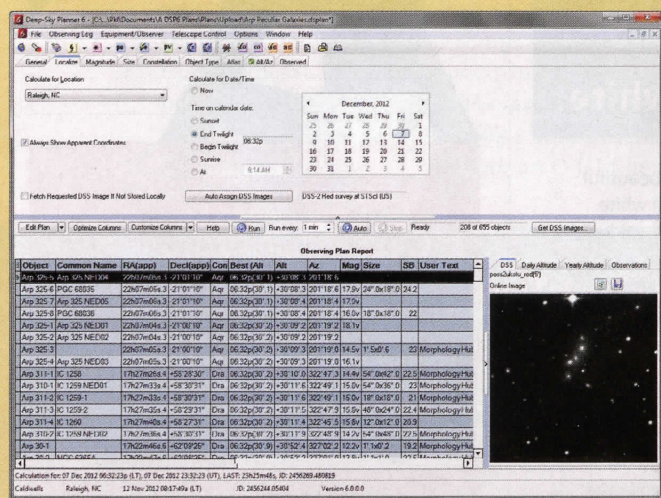
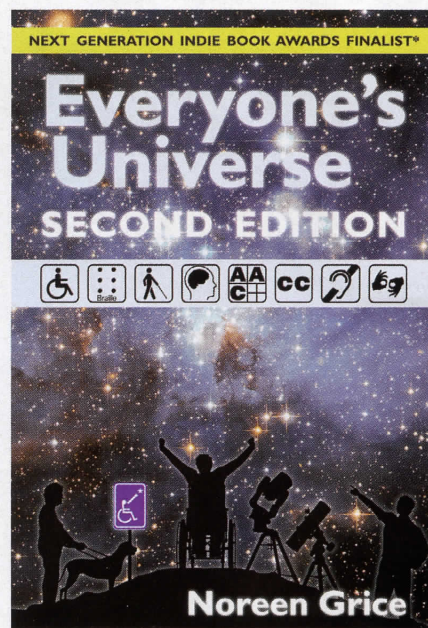
▲ **BINOVIEWING DELUXE** Denkmeyer Optical announces its most advanced binoviewer, the Binotron-27 Super System (introductory price \$1,099). It features high-quality 27-millimeter prisms that fully illuminate 1¼-inch eyepieces. A wide range of eyepiece spacing can accommodate most observers' interpupillary distance. The unit utilizes new patent-pending Collitron eyepiece holders that allow the user to precisely collimate the unit without tools, and both sides focus with non-rotating helical motion. The Binotron-27 fits in telescopes with 2-inch focusers, and incorporates the company's popular Power X Switch that allow users the versatility of three different magnifications with a single set of eyepieces, and an integrated optical corrector with 45-mm clear aperture.

**Denkmeyer Optical**

135 Marcus Blvd., Hauppauge, NY 11788  
410-208-6014; www.denkmeyer.com

▼ **EVERYONE'S UNIVERSE** Author Noreen Grice updates her book *Everyone's Universe: A Guide to Accessible Astronomy Places* (\$27.95). In this expanded second edition, Grice presents comprehensive educational strategies to make astronomy fun and accessible to everyone, including those with physical or neurological disabilities. The book also includes a comprehensive travel guide to accessible observatories and planetariums throughout the United States. *Everyone's Universe* is particularly targeted toward teachers, planetariums, and other astronomy outreach programs. Paperback, 336 pages, ISBN 978-0-9833567-3-8.

Available from amazon.com  
www.youcandoastronomy.com



◀ **OBSERVING AID** Take advantage of unproductive cloudy nights and daylight hours by planning your evening observing sessions with *Deep-Sky Planner 6* (\$80.95). This software package allows you to search through more than 1.25 million objects in its extensive database, with accurate positions for each object and the best time to observe particular objects from your location. *Deep-Sky Planner 6* includes numerous improvements to the user interface, and allows you to export your custom observing plans directly to telescope navigation programs including *Argo Navis*, *Sky Commander*, and *SkySafari*. The program can also drive Go To telescopes using the ASCOM 6 protocol, and works in conjunction with your favorite planetarium programs. An upgrade from version 5 is available for \$42. Requires *Microsoft Windows XP* through *Windows 8*.

**Knightware**

305 Evans Estates Dr., Cary, NC 27513  
www.knightware.biz